

REFRIGERANT DISTRIBUTORS VENTURI-FLO™ LOW PRESSURE DROP DISTRIBUTORS

KEEPFLO IS PROUD OF ITS LEGACY AS THE ORIGINAL DESIGNER OF THE VENTURI-FLO LOW PRESSURE DROP DISTRIBUTOR, RENOWNED IN THE HVACR TRADE FOR ITS UNIQUE, ONE-PIECE DESIGN. VENTURI-FLO DISTRIBUTORS PROVIDE FOR MAXIMUM DISTRIBUTION EFFICIENCY TO A MULTI-CIRCUIT EVAPORATOR, WHILE ENSURING MINIMUM PRESSURE DROP. THIS IS ACCOMPLISHED BY UTILIZING A LOW PRESSURE DROP FLOW PATH IN THE DESIGN OF THE DISTRIBUTOR, WHICH RESULTS IN A SMOOTH-CONTOUR FLOW PATH THAT DELIVERS EQUAL DISTRIBUTION OF THE REFRIGERANT TO EACH EVAPORATOR CIRCUIT. VENTURI-FLO DISTRIBUTORS CAN BE USED ON ANY DIRECT EXPANSION MULTI-CIRCUIT EVAPORATOR DESIGNED WITH EQUAL LENGTH AND EQUALLY LOADED CIRCUITS.



VISIT
WWW.KEEPFLO.COM
FOR DISTRIBUTOR
SELECTION SOFTWARE

5/32" ODF VENTURI CAPACITY

DISTRIBUTORS 5/32 ODF																
Catalog Number	# of outlets	TONS - R-22					TONS - R-134A					TONS - R-404A / R-502 / R-507				
		40°	20°	0°	-20°	-40°	40°	20°	0°	-20°	-40°	40°	20°	0°	-20°	-40°
4-2.5-2 5-2.5-2	2	0.88	0.60	0.40	0.26	0.18	0.600	0.408	0.264	0.168	0.120	0.45	0.31	0.19	0.12	0.09
4-2.5-3 5-2.5-3	3	1.32	0.90	0.60	0.39	0.27	0.900	0.612	0.396	0.252	0.180	0.68	0.46	0.29	0.18	0.13
4-2.5-4 5-2.5-4	4	1.76	1.20	0.80	0.52	0.36	1.200	0.816	0.528	0.336	0.240	0.90	0.61	0.39	0.25	0.18
4-2.5-5 5-2.5-5	5	2.20	1.50	1.00	0.65	0.45	1.500	1.020	0.660	0.420	0.300	1.13	0.77	0.49	0.31	0.22
4-2.5-6 5-2.5-6	6	2.64	1.80	1.20	0.78	0.54	1.800	1.224	0.792	0.504	0.360	1.35	0.92	0.59	0.37	0.27
4-2.5-7 5-2.5-7	7	3.08	2.10	1.40	0.91	0.63	2.100	1.428	0.924	0.588	0.420	1.57	1.07	0.69	0.43	0.31
4-2.5-8 5-2.5-8	8	3.52	2.40	1.60	1.04	0.72	2.400	1.632	1.056	0.672	0.480	1.80	1.22	0.79	0.50	0.36
4-2.5-9 5-2.5-9	9	3.96	2.70	1.80	1.17	0.81	2.700	1.836	1.188	0.756	0.540	2.03	1.38	0.89	0.56	0.40
4-2.5-10 5-2.5-10 7-2.5-10	10	4.40	3.00	2.00	1.30	0.90	3.00	2.04	1.32	0.84	0.60	2.25	1.53	0.99	0.63	0.45
7-2.5-11	11	4.84	3.30	2.20	1.43	0.99	3.30	2.24	1.45	0.92	0.66	2.47	1.68	1.08	0.69	0.49
F5-2.5-12 7-2.5-12	12	5.28	3.60	2.40	1.56	1.08	3.60	2.45	1.58	1.01	0.72	2.70	1.84	1.18	0.75	0.54
F5-2.5-13 7-2.5-13	13	5.72	3.90	2.60	1.69	1.17	3.90	2.65	1.72	1.09	0.78	2.93	1.99	1.28	0.81	0.58
F5-2.5-14 7-2.5-14	14	6.16	4.20	2.80	1.82	1.26	4.20	2.86	1.85	1.18	0.84	3.15	2.24	1.38	0.88	0.63
F5-2.5-15 7-2.5-15	15	6.60	4.50	3.00	1.95	1.35	4.50	3.06	1.98	1.26	0.90	3.37	2.36	1.48	0.94	0.67
7-2.5-16	16	7.04	4.80	3.20	2.08	1.44	4.80	3.26	2.11	1.34	0.96	3.60	2.49	1.58	1.00	0.72
7-2.5-17	17	7.48	5.10	3.50	2.21	1.54	5.10	3.47	2.24	1.43	1.02	3.82	2.61	1.68	1.06	0.76
7-2.5-18	18	7.92	5.40	3.60	2.34	1.62	5.40	3.67	2.38	1.51	1.08	4.05	2.75	1.78	1.13	0.81
7-2.5-19	19	8.36	5.70	3.80	2.47	1.71	5.70	3.88	2.51	1.60	1.14	4.27	2.90	1.83	1.19	0.85
7-2.5-20	20	8.80	6.00	4.00	2.60	1.80	6.00	4.08	2.64	1.68	1.20	4.50	3.06	1.98	1.26	0.90
7-2.5-21	21	9.25	6.30	4.20	2.73	1.89	6.30	4.28	2.77	1.76	1.26	4.72	3.21	2.07	1.32	0.94
7-2.5-22	22	9.70	6.60	4.40	2.86	1.98	6.60	4.49	2.90	1.85	1.32	4.95	3.36	2.17	1.38	0.99
7-2.5-23	23	10.15	6.90	4.60	2.99	2.07	6.90	4.69	3.04	1.93	1.38	5.17	3.51	2.27	1.44	1.03
7-2.5-24	24	10.60	7.20	4.80	3.12	2.16	7.20	4.90	3.17	2.02	1.44	5.40	3.67	2.37	1.51	1.08

VISIT
WWW.KEEPFLO.COM
FOR DISTRIBUTOR
SELECTION SOFTWARE

LET US DO IT FOR YOU! KEEPFLO
CAN BRAZE COPPER STUB INLETS
AND/OR COPPER CIRCUIT LEADS
TO ALMOST ANY DISTRIBUTOR.
**ASK YOUR KEEPFLO SALESPERSON
ABOUT THESE OPTIONS.**

3/16" ODF VENTURI CAPACITY

DISTRIBUTORS 3/16 ODF																
Catalog Number	# of outlets	3/16 ODF SIZE OUTLET														
		TONS - R-22					TONS - R-134A					TONS - R-404A / R-502 / R-507				
		40°	20°	0°	-20°	-40°	40°	20°	0°	-20°	-40°	40°	20°	0°	-20°	-40°
3-3-2 4-3-2 5-3-2	2	1.80	1.20	0.79	0.53	0.37	1.20	0.82	0.54	0.36	0.25	0.90	0.61	0.40	0.27	0.18
3-3-3 4-3-3 5-3-3	3	2.60	1.80	1.20	0.79	0.55	1.80	1.20	0.82	0.54	0.38	1.40	0.90	0.61	0.40	0.28
3-3-4 4-3-4 5-3-4	4	3.50	2.40	1.60	1.10	0.76	2.40	1.68	1.08	0.72	0.50	1.80	1.30	0.81	0.54	0.37
3-3-5 4-3-5 5-3-5 7-3-5	5	4.40	3.00	2.00	1.30	0.92	3.00	2.04	1.32	0.90	0.64	2.30	1.50	0.99	0.67	0.47
3-3-6 4-3-6 5-3-6 7-3-6	6	5.30	3.60	2.40	1.60	1.10	3.60	2.40	1.68	1.08	0.76	2.70	1.80	1.30	0.81	0.56
3-3-7 4-3-7 5-3-7 7-3-7	7	6.10	4.20	2.80	1.80	1.30	4.20	2.88	1.92	1.32	0.89	3.10	2.20	1.40	0.99	0.66
4-3-8 5-3-8 7-3-8 9-3-8	8	7.00	4.80	3.20	2.10	1.50	4.80	3.24	2.16	1.44	1.01	3.60	2.40	1.60	1.10	0.75
4-3-9 5-3-9 7-3-9 9-3-9	9	7.90	5.40	3.60	2.40	1.70	5.40	3.72	2.40	1.68	1.14	4.10	2.80	1.80	1.30	0.85
5-3-10 7-3-10 9-3-10	10	8.80	6.00	3.90	2.60	1.80	6.00	4.08	2.76	1.80	1.32	4.50	3.10	2.10	1.40	0.99
7-3-11 9-3-11	11	9.60	6.50	4.30	2.90	2.00	6.60	4.44	3.00	2.04	1.44	5.00	3.30	2.30	1.50	1.10
5-3-12 7-3-12 9-3-12	12	10.50	7.10	4.70	3.20	2.20	7.20	4.92	3.24	2.16	1.56	5.40	3.70	2.40	1.60	1.20
F5-3-13 7-3-13 9-3-13	13	11.40	7.70	5.10	3.40	2.40	7.80	5.28	3.48	2.40	1.68	5.90	4.00	2.60	1.80	1.30
7-3-14 9-3-14	14	12.30	8.30	5.50	3.70	2.60	8.40	5.76	3.84	2.52	1.80	6.30	4.30	2.90	1.90	1.40
7-3-15 9-3-15	15	13.10	8.90	5.90	4.00	2.80	9.00	6.12	4.08	2.76	1.92	6.80	4.60	3.10	2.10	1.50
7-3-16 9-3-16	16	14.00	9.50	6.30	4.20	2.90	9.60	6.48	4.32	2.88	2.04	7.20	4.90	3.20	2.20	1.50
7-3-17 9-3-17	17	14.90	10.10	6.70	4.50	3.10	10.20	6.96	4.56	3.12	2.16	7.70	5.20	3.40	2.30	1.60
7-3-18 9-3-18	18	15.80	10.70	7.10	4.70	3.30	10.80	7.32	4.92	3.24	2.28	8.10	5.50	3.70	2.40	1.70
7-3-19 9-3-19	19	16.60	11.30	7.50	5.00	3.50	11.40	7.80	5.16	3.48	2.40	8.60	5.90	3.90	2.60	1.80
7-3-20 9-3-20	20	17.50	11.90	7.90	5.30	3.70	12.00	8.16	5.40	3.60	2.52	9.00	6.10	4.10	2.70	1.90
7-3-21 9-3-21	21	18.40	12.50	8.30	5.50	3.90	12.60	8.52	5.64	3.72	2.64	9.40	6.40	4.30	2.80	2.00
7-3-22 9-3-22	22	19.20	13.10	8.70	5.80	4.00	13.20	9.00	5.88	3.96	2.76	9.90	6.70	4.50	2.90	2.10
7-3-23 9-3-23	23	20.10	13.70	9.10	6.00	4.20	13.80	9.36	6.12	4.08	2.88	10.30	7.00	4.70	3.00	2.20
7-3-24 9-3-24	24	21.00	14.30	9.50	6.30	4.40	14.40	9.84	6.48	4.32	3.00	10.80	7.40	4.90	3.20	2.30

REFRIGERANT DISTRIBUTORS
VENTURI-FLO™
 LOW PRESSURE DROP DISTRIBUTORS

1/4" ODF VENTURI CAPACITY

DISTRIBUTORS 1/4 ODF																
Catalog Number	# of outlets	1/4 ODF SIZE OUTLET														
		TONS - R-22					TONS - R-134A					TONS - R-404A / R-502 / R-507				
		40°	20°	0°	-20°	-40°	40°	20°	0°	-20°	-40°	40°	20°	0°	-20°	-40°
4-4-2 5-4-2 7-4-2	2	3.50	2.40	1.60	1.10	0.76	2.40	1.68	1.08	0.72	0.50	1.80	1.30	0.81	0.54	0.37
4-4-3 5-4-3 7-4-3	3	5.30	3.60	2.40	1.60	1.10	3.60	2.40	1.68	1.08	0.76	2.70	1.80	1.30	0.81	0.56
4-4-4 5-4-4 7-4-4	4	7.00	4.80	3.20	2.10	1.50	4.80	3.24	2.16	1.44	1.01	3.60	2.40	1.60	1.10	0.75
4-4-5 5-4-5 7-4-5	5	8.80	6.00	3.90	2.60	1.80	6.00	4.08	2.76	1.80	1.32	4.50	3.10	2.10	1.40	0.99
4-4-6 5-4-6 7-4-6 9-4-6	6	10.50	7.10	4.70	3.20	2.20	7.20	4.92	3.24	2.16	1.56	5.40	3.70	2.40	1.60	1.20
7-4-7 9-4-7	7	12.30	8.30	5.50	3.70	2.60	8.40	5.76	3.84	2.52	1.80	6.30	4.30	2.90	1.90	1.40
5-4-8 7-4-8 9-4-8	8	14.00	9.50	6.30	4.20	2.90	9.60	6.48	4.32	2.88	2.04	7.20	4.90	3.20	2.20	1.50
5-4-9 7-4-9 9-4-9 11-4-9	9	15.80	10.70	7.10	4.70	3.30	10.80	7.32	4.92	3.24	2.28	8.10	5.50	3.70	2.40	1.70
7-4-10 9-4-10 11-4-10	10	17.50	11.90	7.90	5.30	3.70	12.00	8.16	5.40	3.60	2.52	9.00	6.10	4.10	2.70	1.90
7-4-11 11-4-11	11	19.30	13.10	8.70	5.80	4.10	13.20	9.00	6.00	3.96	2.76	9.90	6.80	4.50	3.00	2.10
7-4-12 9-4-12 11-4-12	12	21.00	14.30	9.50	6.30	4.40	14.40	9.84	6.48	4.32	3.00	10.80	7.40	4.90	3.20	2.30
7-4-13 9-4-13 11-4-13	13	22.80	15.50	10.20	6.80	4.80	15.60	10.56	7.08	4.68	3.24	11.70	7.90	5.30	3.50	2.40
7-4-14 9-4-14 11-4-14	14	24.50	16.70	11.00	7.40	5.20	16.80	11.40	7.56	5.04	3.48	12.60	8.60	5.70	3.80	2.60
7-4-15 9-4-15 11-4-15	15	26.30	17.90	11.80	7.90	5.50	18.00	12.24	8.04	5.40	3.84	13.50	9.20	6.00	4.10	2.90
7-4-16 9-4-16 11-4-16	16	28.00	19.00	12.60	8.40	5.90	19.20	13.08	8.64	5.76	4.08	14.40	9.80	6.50	4.30	3.10
7-4-17 11-4-17	17	29.80	20.20	13.40	8.90	6.30	20.40	13.92	9.24	6.12	4.32	15.30	10.40	6.90	4.60	3.20
7-4-18 11-4-18	18	31.50	21.40	14.20	9.50	6.60	21.60	14.64	9.72	6.48	4.56	16.20	11.00	7.30	4.90	3.40
7-4-19 11-4-19	19	33.30	22.60	15.00	10.00	7.00	22.80	15.48	10.32	6.84	4.80	17.10	11.60	7.70	5.10	3.60
7-4-20 11-4-20	20	35.00	23.80	15.80	10.50	7.40	24.00	16.32	10.80	7.20	5.04	18.00	12.20	8.10	5.40	3.80
7-4-21 11-4-21	21	36.80	25.00	16.60	11.10	7.70	25.20	17.16	11.40	7.56	5.28	18.90	12.90	8.60	5.70	4.00
7-4-22 11-4-22	22	38.50	26.20	17.30	11.60	8.10	26.40	18.00	11.88	7.92	5.52	19.80	13.50	8.90	5.90	4.10
7-4-23 11-4-23	23	40.30	27.40	18.10	12.10	8.50	27.60	18.72	12.48	8.28	5.76	20.70	14.00	9.40	6.20	4.30
7-4-24 11-4-24	24	42.00	28.60	18.90	12.60	8.80	28.80	19.56	12.96	8.64	6.00	21.60	14.70	9.70	6.50	4.50

5/16" ODF VENTURI CAPACITY

DISTRIBUTORS 5/16 ODF																
Catalog Number	# of outlets	5/16 ODF SIZE OUTLET														
		TONS - R-22					TONS - R-134A					TONS - R-404A / R-502 / R-507				
		40°	20°	0°	-20°	-40°	40°	20°	0°	-20°	-40°	40°	20°	0°	-20°	-40°
4-5-2 5-5-2 7-5-2	2	7.00	4.80	3.20	2.10	1.50	4.80	3.24	2.16	1.44	1.01	3.60	2.40	1.60	1.10	0.75
F4-5-3 5-5-3 7-5-3	3	10.50	7.10	4.70	3.20	2.20	7.20	4.92	3.24	2.16	1.56	5.40	3.70	2.40	1.60	1.20
F4-5-4 5-5-4 7-5-4	4	14.00	9.50	6.30	4.20	2.90	9.60	6.48	4.32	2.88	2.04	7.20	4.90	3.20	2.20	1.50
7-5-5 9-5-5	5	17.50	11.90	7.90	5.30	3.70	12.00	8.16	5.40	3.60	2.52	9.00	6.10	4.10	2.70	1.90
7-5-6 9-5-6	6	21.00	14.30	9.50	6.30	4.40	14.40	9.84	6.48	4.32	3.00	10.80	7.40	4.90	3.20	2.30
9-5-7 11-5-7	7	24.50	16.70	11.00	7.40	5.20	16.80	11.40	7.56	5.04	3.48	12.60	8.60	5.70	3.80	2.60
9-5-8 11-5-8	8	28.00	19.00	12.60	8.40	5.90	19.20	13.08	8.64	5.76	4.08	14.40	9.80	6.50	4.30	3.10
11-5-9	9	31.50	21.40	14.20	9.50	6.60	21.60	14.64	9.72	6.48	4.56	16.20	11.00	7.30	4.90	3.40
11-5-10	10	35.00	23.80	15.80	10.50	7.40	24.00	16.32	10.80	7.20	5.04	18.00	12.20	8.10	5.40	3.80
11-5-11	11	38.50	26.20	17.30	11.60	8.10	26.40	18.00	11.88	7.92	5.52	19.80	13.50	8.90	5.90	4.10
11-5-12	12	42.00	28.60	18.90	12.60	8.80	28.80	19.56	12.96	8.64	6.00	21.60	14.70	9.70	6.50	4.50
11-5-13	13	45.50	30.90	20.50	13.70	9.60	31.20	21.24	14.04	9.36	6.60	23.40	15.90	10.50	7.00	5.00
11-5-14	14	49.00	33.30	22.10	14.70	10.30	33.60	22.80	15.12	10.08	7.08	25.20	17.10	11.30	7.60	5.30
11-5-15	15	52.50	35.70	23.60	15.80	11.00	36.00	24.48	16.20	10.80	7.56	27.00	18.40	12.20	8.10	5.70
13-5-16	16	56.00	38.10	25.20	16.80	11.80	38.40	26.16	17.28	11.52	8.04	28.80	19.60	13.00	8.60	6.00
13-5-17	17	59.50	40.40	26.80	17.80	12.50	40.80	27.72	18.36	12.24	8.52	30.60	20.80	13.80	9.10	6.40
13-5-18	18	63.00	42.80	28.40	18.90	13.20	43.20	29.40	19.44	12.96	9.12	32.40	22.10	14.60	9.70	6.80
13-5-19	19	66.50	45.20	29.90	20.00	14.00	45.60	30.96	20.52	13.68	9.60	34.20	23.20	15.40	10.30	7.20
13-5-20	20	70.00	47.60	31.40	21.00	14.70	48.00	32.64	21.60	14.40	10.08	36.00	24.50	16.20	10.80	7.70
13-5-21	21	73.50	50.00	32.90	22.00	15.40	50.40	34.32	22.68	15.12	10.56	37.80	25.70	17.00	11.30	7.90
13-5-22	22	77.00	52.50	34.40	23.10	16.10	52.80	36.00	23.76	15.84	11.04	39.60	27.00	17.80	11.90	8.30

VISIT
WWW.KEEPFLO.COM
 FOR DISTRIBUTOR
 SELECTION SOFTWARE

LET US DO IT FOR YOU! KEEPFLO
 CAN BRAZE COPPER STUB INLETS
 AND/OR COPPER CIRCUIT LEADS
 TO ALMOST ANY DISTRIBUTOR.
**ASK YOUR KEEPFLO SALESPERSON
 ABOUT THESE OPTIONS.**

REFRIGERANT DISTRIBUTORS
VENTURI-FLO™
 LOW PRESSURE DROP DISTRIBUTORS

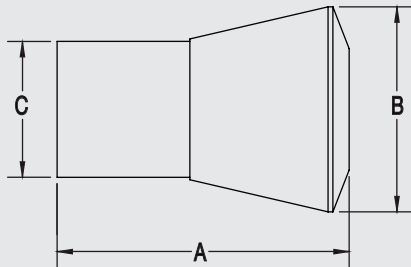
3/8" ODF VENTURI CAPACITY

DISTRIBUTORS 3/8 ODF																
Catalog Number	# Outlets	TONS - R-22					TONS - R-134A					TONS - R-404A / R-502 / R-507				
		40°	20°	0°	-20°	-40°	40°	20°	0°	-20°	-40°	40°	20°	0°	-20°	-40°
F4-6-2 7-6-2	2	12.3	8.3	5.5	3.7	2.6	8.4	5.8	3.8	2.5	1.8	6.3	4.3	2.9	1.9	1.4
F5-6-3 7-6-3	3	18.4	12.5	8.3	5.5	3.9	12.6	8.5	5.6	3.8	2.6	9.5	6.4	4.2	2.9	22.0
F5-6-4 7-6-4	4	24.5	16.7	11.1	7.4	5.1	16.8	11.4	7.6	5.0	3.5	12.6	8.6	5.7	3.8	2.6
9-6-5 11-6-5	5	30.6	20.8	13.9	9.2	6.4	21.0	14.3	9.5	6.4	4.4	15.8	10.7	7.1	4.8	3.3
9-6-6 11-6-6	6	36.8	25.0	16.6	11.1	7.7	25.2	17.2	11.4	7.6	5.3	18.9	12.9	8.6	5.7	4.0
11-6-7	7	42.9	29.2	19.4	12.9	9.0	29.4	20.0	13.2	8.9	6.1	22.0	15.0	9.9	6.7	4.6
11-6-8	8	49.0	33.3	22.2	14.7	10.3	33.6	22.8	15.1	10.1	7.1	25.2	17.1	11.3	7.6	5.3
11-6-9	9	55.1	37.5	25.0	16.5	11.6	37.8	25.7	17.0	11.3	7.9	28.3	19.2	12.7	8.5	6.0
11-6-10	10	61.3	41.7	27.7	18.4	12.9	42.0	28.6	19.0	12.6	8.9	31.5	21.4	14.2	9.5	6.7
11-6-11	11	67.4	45.8	30.4	20.2	14.2	46.2	31.4	20.8	13.8	9.7	34.3	23.5	15.6	10.4	7.2
11-6-12	12	73.5	50.0	33.2	22.1	15.5	50.4	34.3	22.7	15.1	10.6	37.8	25.7	17.0	11.3	7.9
13-6-17	17	99.4	67.6	44.8	29.9	21.0	68.2	46.3	30.7	20.5	14.4	51.1	34.7	23.0	15.4	10.8
13-6-18	18	108.5	73.9	49.0	32.7	21.7	74.4	50.6	33.6	22.4	14.9	55.8	37.9	25.2	16.8	11.2

1/2" ODF VENTURI CAPACITY

DISTRIBUTORS 1/2 ODF																
Catalog Number	# Outlets	TONS - R-22					TONS - R-134A					TONS - R-404A / R-502 / R-507				
		40°	20°	0°	-20°	-40°	40°	20°	0°	-20°	-40°	40°	20°	0°	-20°	-40°
11-8-2	2	17.5	11.9	7.9	5.3	3.8	12.0	8.2	5.4	3.6	2.5	9.0	6.1	4.1	2.7	1.9
11-8-3	3	26.3	17.9	11.8	7.9	5.5	18.0	12.2	8.2	5.4	4.2	13.5	9.2	6.1	4.1	3.2
11-8-4	4	35.0	23.8	15.8	10.5	7.6	24.0	16.3	10.8	7.2	5.0	18.0	12.2	8.1	5.4	3.8
11-8-5	5	43.8	29.8	19.7	13.2	9.2	30.0	20.4	13.6	9.0	6.4	22.5	15.3	10.2	6.8	4.8
11-8-6	6	52.5	35.7	23.6	15.8	11.0	36.0	24.5	16.2	10.8	7.6	27.0	18.4	12.2	8.1	5.7
11-8-7	7	61.3	41.7	27.6	18.4	12.9	42.0	28.6	19.0	12.6	8.9	31.5	21.4	14.2	9.5	6.7
11-8-8	8	70.0	47.7	31.5	21.1	14.7	48.0	32.6	21.7	14.4	10.2	36.0	24.5	16.3	10.8	7.7
11-8-9	9	78.7	53.7	31.9	23.7	16.5	54.0	36.7	24.4	16.2	11.4	40.5	27.5	18.3	12.1	8.6
11-8-10	10	87.5	59.6	39.4	26.3	18.4	60.0	40.8	27.1	18.0	12.7	45.0	30.6	20.3	13.5	9.5
11-8-11	11	96.3	65.6	43.3	28.9	20.3	66.0	44.9	29.9	19.8	14.0	49.5	33.7	22.4	14.8	10.5
11-8-12	12	105.2	71.5	47.2	31.5	22.1	72.0	49.0	32.6	21.6	15.4	54.0	36.8	24.5	16.2	11.4
11-8-13	13	113.8	77.5	51.2	34.2	24.0	78.0	53.0	35.3	23.4	16.6	58.5	39.8	26.5	17.6	12.4

VENTURI DIMENSIONS

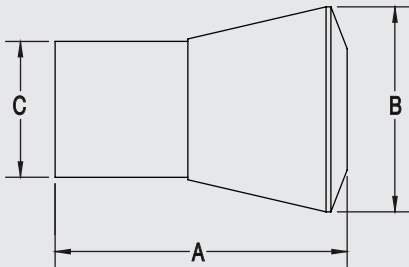


LET US DO IT FOR YOU! KEEPFLU CAN BRAZE COPPER STUB INLETS AND/OR COPPER CIRCUIT LEADS TO ALMOST ANY DISTRIBUTOR. ASK YOUR KEEPFLU SALESPERSON ABOUT THESE OPTIONS.

ROUGHING IN DIMENSIONS			
Catalog Number	A LENGTH	B DIA	C DIA ODM
3-3-2	0.80	0.63	0.38
3-3-3			
3-3-4	0.91	0.69	
3-3-5	1.04	0.81	
3-3-6	1.20	0.81	
3-3-7	1.36	0.88	
4-2.5-2	0.70	0.50	0.50
4-2.5-3			
4-2.5-4	0.91	0.63	
4-2.5-5	1.03	0.69	
4-2.5-6	1.03	0.69	
4-2.5-7	1.26	0.73	
4-2.5-8	1.27	0.80	
4-2.5-9	1.37	0.86	
4-2.5-10	1.47	0.94	
4-3-2	0.81	0.63	
4-3-3			
4-3-4	1.20	0.81	
4-3-5			
4-3-6			
4-3-7	1.36	0.88	
4-3-8	1.24	0.88	
4-3-9	1.61	1.00	
4-4-2	1.19	0.81	
4-4-3			
4-4-4			
4-4-5	1.55	1.06	
4-4-6			
4-4-7	1.33	1.25	
4-4-8			
5-2.5-2	0.97	0.81	
5-2.5-3			
5-2.5-4			
5-2.5-5	0.96	0.81	
5-2.5-6			
5-2.5-7			
5-2.5-8	1.43	0.94	
5-2.5-9			
5-2.5-10			
5-3-2	0.89	0.63	
5-3-3			
5-3-4	1.24	0.81	
5-3-5			
5-3-6			
5-3-7	1.38	0.88	
5-3-8			
5-3-9	1.38	1.25	
5-3-10			
5-3-12			
5-4-2	1.20	0.88	
5-4-3			
5-4-4			
5-4-5	1.50	1.00	
5-4-6			
5-4-7	1.34	1.25	
5-4-8			
5-4-9	1.74	1.63	
5-4-10			
5-4-11			
5-4-12			
5-5-2	1.17	0.88	
5-5-3	1.50	1.06	
5-5-4			

ROUGHING IN DIMENSIONS			
Catalog Number	A LENGTH	B DIA	C DIA ODM
7-2.5-10	1.17	1.06	0.88
7-2.5-11			
7-2.5-12			
7-2.5-13	1.87	1.25	
7-2.5-14			
7-2.5-15			
7-2.5-16			
7-2.5-17	1.71	1.50	
7-2.5-18			
7-2.5-19			
7-2.5-20	1.90	1.75	
7-2.5-21			
7-2.5-22			
7-2.5-23			
7-2.5-24			
7-3-5	1.50	0.88	
7-3-6			
7-3-7	1.18	1.00	
7-3-8			
7-3-9			
7-3-10	1.37	1.25	
7-3-11			
7-3-12			
7-3-13	1.80	1.63	
7-3-14			
7-3-15			
7-3-16			
7-3-17			
7-3-18	2.22	2.13	
7-3-19			
7-3-20			
7-3-21			
7-3-22			
7-3-23			
7-3-24			
7-4-2	1.33	0.88	
7-4-3			
7-4-4			
7-4-5	1.49	1.06	
7-4-6			
7-4-7	1.35	1.25	
7-4-8			
7-4-9	2.20	1.44	
7-4-10			
7-4-11	1.85	1.75	
7-4-12			
7-4-13			
7-4-14			
7-4-15	2.25	2.25	
7-4-16			
7-4-17			
7-4-18			
7-4-19			
7-4-20			
7-4-21	2.96	2.75	
7-4-22			
7-4-23			
7-4-24			
7-5-2	1.30	0.94	
7-5-3	1.55	1.06	
7-5-4			
7-5-5	1.94	1.25	
7-5-6			
7-6-2	1.50	1.13	
7-6-3			
7-6-4	1.88	1.25	

VENTURI DIMENSIONS

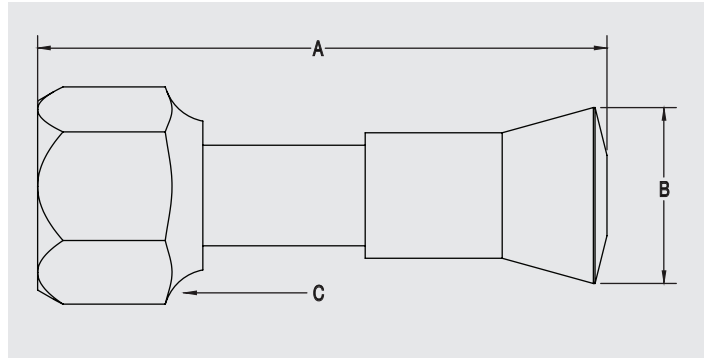
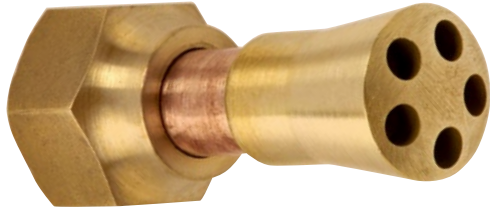


ROUGHING IN DIMENSIONS				
Catalog Number	A LENGTH	B DIA	C DIA ODM	
9-3-8 9-3-9 9-3-10 9-3-11	1.29	1.25	1.13	
9-3-12	1.30	1.25		
9-3-13 9-3-14 9-3-15 9-3-16 9-3-17 9-3-18	1.85	1.75		
9-3-19 9-3-20 9-3-21 9-3-22 9-3-23 9-3-24	2.31	2.11		
9-4-4 9-4-5 9-4-6 9-4-7 9-4-8	1.88	1.13		
9-4-9 9-4-10	2.20	1.38		
9-4-11 9-4-12 9-4-13	1.69	1.63		
9-4-14 9-4-15 9-4-16	2.08	2.00		
9-5-5 9-5-6	1.73	1.25		
9-5-7 9-5-8	2.09	1.63		
9-6-5 9-6-6	1.91	1.63		
11-4-8 11-4-9 11-4-10	2.33	1.44		1.38
11-4-11 11-4-12 11-4-13	1.85	1.75		
11-4-14 11-4-15 11-4-16	2.08	2.00		
11-4-17 11-4-18 11-4-19 11-4-20	2.44	2.25		
11-4-21 11-4-22 11-4-23 11-4-24	3.00	2.75		
11-5-7 11-5-8	2.22	1.63		
11-5-9 11-5-10 11-5-11 11-5-12	2.08	2.00		
11-5-13 11-5-14 11-5-15	2.40	2.25		

ROUGHING IN DIMENSIONS				
Catalog Number	A LENGTH	B DIA	C DIA ODM	
11-6-5 11-6-6	2.39	1.63	1.38	
11-6-7 11-6-8 11-6-9 11-6-10 11-6-11 11-6-12	2.40	2.25		
11-8-2 11-8-3	2.16	1.63		
11-8-4 11-8-5 11-8-6 11-8-7	2.40	2.25		
13-5-15 13-5-16	2.72	2.75		1.63
13-5-17	2.95	3.00		
13-5-18				
13-5-19				
13-5-20				
13-5-21				
13-5-22			2.95	
13-6-17				
13-6-18	2.26	2.38		
13-8-8	2.72	2.75		
13-8-9	2.94	3.00		
13-8-10				
13-8-12				
13-8-13	3.29	3.50		
.430-3-3	1.13	0.75	0.43	
.430-3-4 .430-3-5 .430-3-6	1.20	0.81		
.430-3-7 .430-3-8	1.25	0.88		
.430-4-2	1.13	0.75		
.430-4-3 .430-4-4	1.19	0.81		
.430-4-5	1.22	0.88		

REFRIGERANT DISTRIBUTORS
VENTURI-FLO™
 LOW PRESSURE DROP DISTRIBUTORS

FLARE CONNECTION VENTURI DIMENSIONS



Catalog Number	Inlet Flare Nut Size	A LENGTH	B DIA	C (HEX)
F4-2.5-2 F4-2.5-3	1/2 ODM	1.88	0.50	1.0
F4-2.5-4 F4-2.5-5		2.08	0.63	
F4-2.5-6		2.80	0.69	
F4-2.5-7		2.30	0.73	
F4-2.5-8		2.40	0.81	
F4-2.5-9		2.50	0.88	
F4-2.5-10		2.60	0.92	
F4-3-2 F4-3-3		2.00	0.63	
F4-3-4 F4-3-5 F4-3-6		2.40	0.81	
F4-3-7		2.50	0.88	
F4-3-8		2.70	0.88	
F4-4-2		2.10	0.81	
F4-4-3		2.20	0.81	
F4-4-4		2.35	0.81	
F4-4-5 F4-4-6		2.70	1.06	
F4-5-2		2.40	0.88	
F4-5-3		2.50	0.92	
F4-5-4		2.80	1.06	
F4-6-2		2.70	0.88	

Catalog Number	Inlet Flare Nut Size	A LENGTH	B DIA	C (HEX)
F5-2.5-2 F5-2.5-3 F5-2.5-4	5/8 ODM	2.18	0.63	1.13
F5-2.5-5 F5-2.5-6		2.36	0.66	
F5-2.5-7 F5-2.5-8 F5-2.5-9		2.67	0.94	
F5-2.5-10		2.72	0.91	
F5-2.5-12		2.92	1.02	
F5-2.5-13 F5-2.5-14 F5-2.5-15		3.31	1.27	
F5-3-2		2.05	0.81	
F5-3-3		2.05	0.63	
F5-3-4 F5-3-5 F5-3-6		2.36	0.81	
F5-3-7 F5-3-8		2.66	0.88	
F5-3-9 F5-3-10 F5-3-11 F5-3-12		3.11	1.25	
F5-3-13		3.67	1.61	
F5-4-2 F5-4-3 F5-4-4		2.42	0.88	
F5-4-5		2.72	1.00	
F5-4-6		2.72	0.88	
F5-5-2		2.39	0.88	
F5-5-3 F5-5-4		2.72	1.06	
F5-6-3		2.84	1.06	
F5-6-4		3.08	1.20	