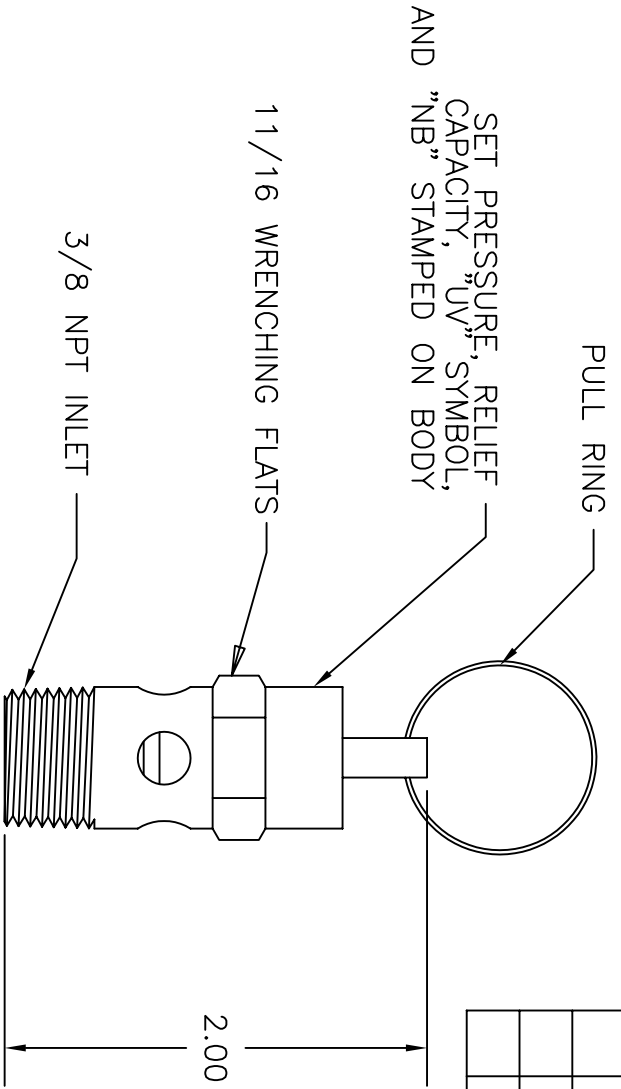
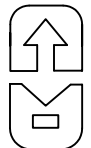


THIS DOCUMENT CONTAINS PROPRIETARY AND CONFIDENTIAL INFORMATION OF CONTROL DEVICES INC. AND MUST BE USED STRICTLY IN ACCORDANCE WITH THE LIMITED PURPOSE FOR WHICH IT WAS SUBMITTED. ANY REPRODUCTION, DISCLOSURE OR USE OF THIS DOCUMENT IS EXPRESSLY PROHIBITED, EXCEPT AS OTHERWISE AGREED IN WRITING.

DATE	SYM	REVISION RECORD	ECN NO.	CK.
3/94	A	REDRAWN ON AUTOCAD		



- NOTES
1. SET PRESSURE RANGE IS 25 PSI TO 350 PSI.
 2. RELIEF CAPACITY IS GIVEN BY THE EQUATION
 $Q = .759(1.1P + 14.7)$, WHERE
 Q = RELIEF CAPACITY IN SCFM, AND
 P = SET PRESSURE IN PSI
 3. MATERIALS OF CONSTRUCTION
 BODY, ROD, CUP, SCREW--BRASS
 SPRING--MUSIC WIRE
 PAD--SILICONE OR FLUOROCARBON RUBBER
 PULL RING--STAINLESS STEEL
 4. MAX TEMPERATURE 250° F

TOLERANCES (EXCEPT AS NOTED)		 control devices inc. 711 HANLEY INDUSTRIAL COURT ST. LOUIS, MISSOURI 63144			
DECIMAL	+				
FRACTIONAL	+	MATERIAL	SCALE	SIZE	DRAWN BY
ANGULAR	+		FULL	A	RMH
DATE	10/3/90	TITLE			
C:\ACADWIN\PARTDWS\ST2533.DWG		VALVE, ASME SAFETY, 3/8 NPT			
CAD FILE		DRAWING NUMBER			
		ST33			
		REV A			

ALL DIMENSIONS ARE IN INCHES.