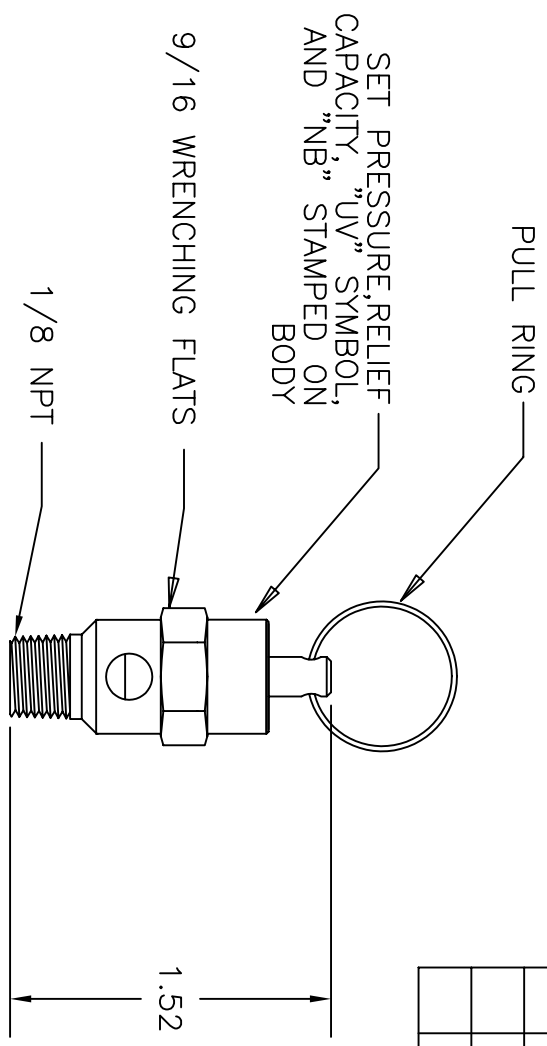


THIS DOCUMENT CONTAINS PROPRIETARY AND CONFIDENTIAL INFORMATION OF CONTROL DEVICES INC. AND MUST BE USED STRICTLY IN ACCORDANCE WITH THE LIMITED PURPOSE FOR WHICH IT WAS SUBMITTED. ANY REPRODUCTION, DISCLOSURE OR USE OF THIS DOCUMENT IS EXPRESSLY PROHIBITED, EXCEPT AS OTHERWISE AGREED IN WRITING.

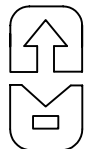
DATE	SYM	REVISION RECORD	ECN NO.	CK.
3/94	D	REDRAWN ON AUTOCAD		



NOTES

1. SET PRESSURE RANGE IS 75 PSI TO 250 PSI.
2. RELIEF CAPACITY IS GIVEN BY THE EQUATION  
 $Q = 0.276(1.1P + 14.7)$ , WHERE  
 Q = RELIEF CAPACITY IN SCFM, AND  
 P = SET PRESSURE IN PSI
3. MATERIALS OF CONSTRUCTION  
 BODY, ROD, SCREW--BRASS  
 SPRING--STAINLESS STEEL  
 PAD--FLUOROCARBON  
 PULL RING--STAINLESS STEEL
4. MAX TEMPERATURE 250° F
5. MAX INSTALLATION TORQUE = 10 FT LBS

ALL DIMENSIONS ARE IN INCHES.

TOLERANCES (EXCEPT AS NOTED)		 control devices inc. 711 HANLEY INDUSTRIAL COURT ST. LOUIS, MISSOURI 63144	
DECIMAL	+		
FRACTIONAL	±	MATERIAL	SCALE
ANGULAR	±		FULL
DATE	1/15/91	TITLE	SIZE
		VALVE, ASME SAFETY, 1/8 NPT	A
CAD FILE		DRAWN BY	
C:\ACADWIN\PARTDWS\SP12.DWG		RMH	
		APPROVED BY	
		DRAWING NUMBER	
		SP12	
		REV D	