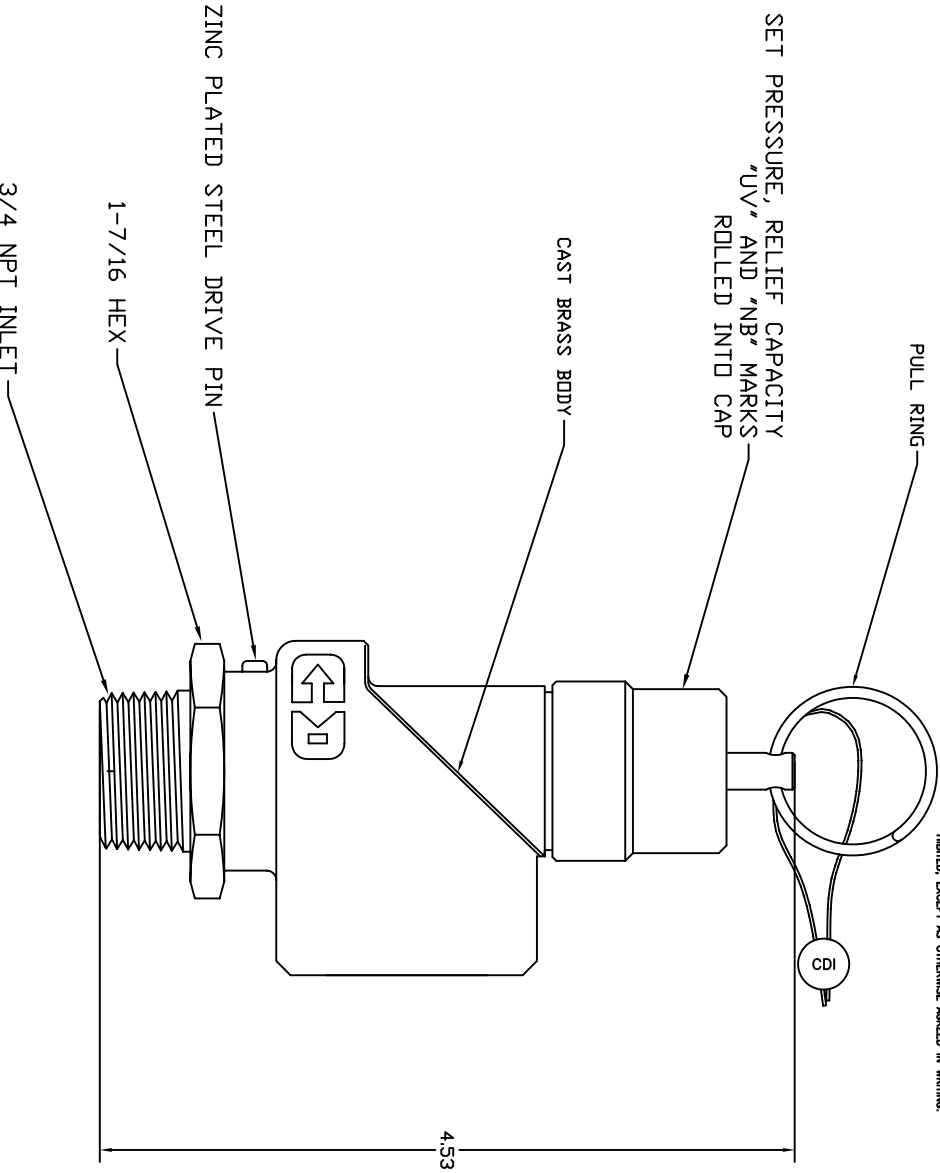


THIS DOCUMENT CONTAINS PROPRIETARY AND CONFIDENTIAL INFORMATION OF CONTROL DEVICES INC. AND MUST BE USED STRICTLY IN ACCORDANCE WITH THE LIMITED PURPOSE FOR WHICH IT WAS SUBMITTED. ANY REPRODUCTION OR TRANSMISSION OF THIS DOCUMENT IS EXPRESSLY PROHIBITED, EXCEPT AS OTHERWISE AGREED IN WRITING.

DATE	SM	REVISION RECORD	EGR. NO.	CHK.



NOTES:

1. SET PRESSURE RANGE 50 TO 300 PSI
2. CERTIFIED RELIEF CAPACITY IS GIVEN BY THE EQUATION
 $Q = 3.26 (1.1P + 14.7)$, WHERE
 Q = RELIEF CAPACITY IN SCFM, AND
 P = SET PRESSURE IN PSI
3. MATERIALS OF CONSTRUCTION:
 BODY, ROD, DISK, ADJUSTMENT SPRING, PULL RING – STAINLESS STEEL
 O-RING – SILICONE OR FLUOROCARBON RUBBER
 SEAL – LEAD

ALL DIMENSIONS ARE IN INCHES.

control devices inc. 711 HAWLEY INDUSTRIAL COURT ST. LOUIS, MISSOURI 63144	
SAFETY VALVE, 3/4 NPT OUTLET	DRAWING NUMBER SCB7575
TOLERANCES (EXCEPT AS NOTED) DECIMAL ± FRACTIONAL ± ANGULAR ±	MATERIAL SCALE 1:1 SIZE B DRAWN BY RMH APPROVED BY
DATE 7/29/98 Q:\ENGR\PARTDWS\SCB7575.DWG	CAD FILE DRAWING NUMBER SCB7575