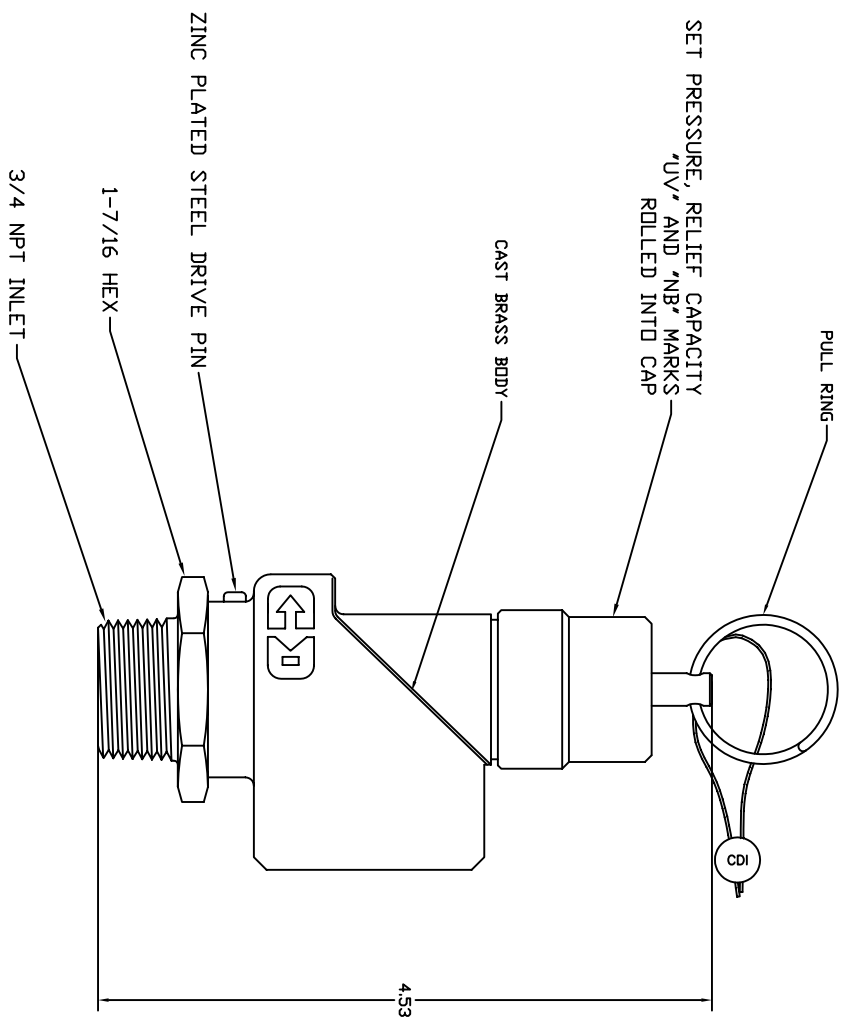


THIS DOCUMENT CONTAINS PROPRIETARY AND CONFIDENTIAL INFORMATION OF CONTROL DEVICES INC. AND MUST BE USED STRICTLY IN ACCORDANCE WITH THE LIMITED PURPOSE FOR WHICH IT WAS SUBMITTED. ANY REPRODUCTION, DISTRIBUTION, OR DISSEMINATION OF THIS DOCUMENT IS PROHIBITED, EXCEPT AS OTHERWISE AGREED IN WRITING.

DATE	SYM	REVISION RECORD	ECN NO.	CHK



NOTES:

1. SET PRESSURE RANGE 50 TO 300 PSI
2. CERTIFIED RELIEF CAPACITY IS GIVEN BY THE EQUATION
 $Q = 3.26 (1.1P + 14.7)$, WHERE
 Q = RELIEF CAPACITY IN SCFM, AND
 P = SET PRESSURE IN PSI
3. MATERIALS OF CONSTRUCTION:
 BODY, ROD, DISK, ADJUSTMENT SPRING, PULL RING - STAINLESS STEEL
 O-RING - SILICONE OR FLUOROCARBON RUBBER
 SEAL - LEAD
4. MAX TEMPERATURE 300 DEG. F.

ALL DIMENSIONS ARE IN INCHES.

control devices inc. 711 HAWLEY INDUSTRIAL COURT ST. LOUIS, MISSOURI 63144	
TOLERANCES (EXCEPT AS NOTED)	SCALE 1:1
DECIMAL +	SIZE B
FRACTIONAL +	DRAWN BY RMH
ANGULAR ±	APPROVED BY
DATE 7/29/98	TITLE SAFETY VALVE, 1" NPT OUTLET
Q:\ENGR\PARTDWS\SCB7510.DWG	DRAWING NUMBER SCB7510