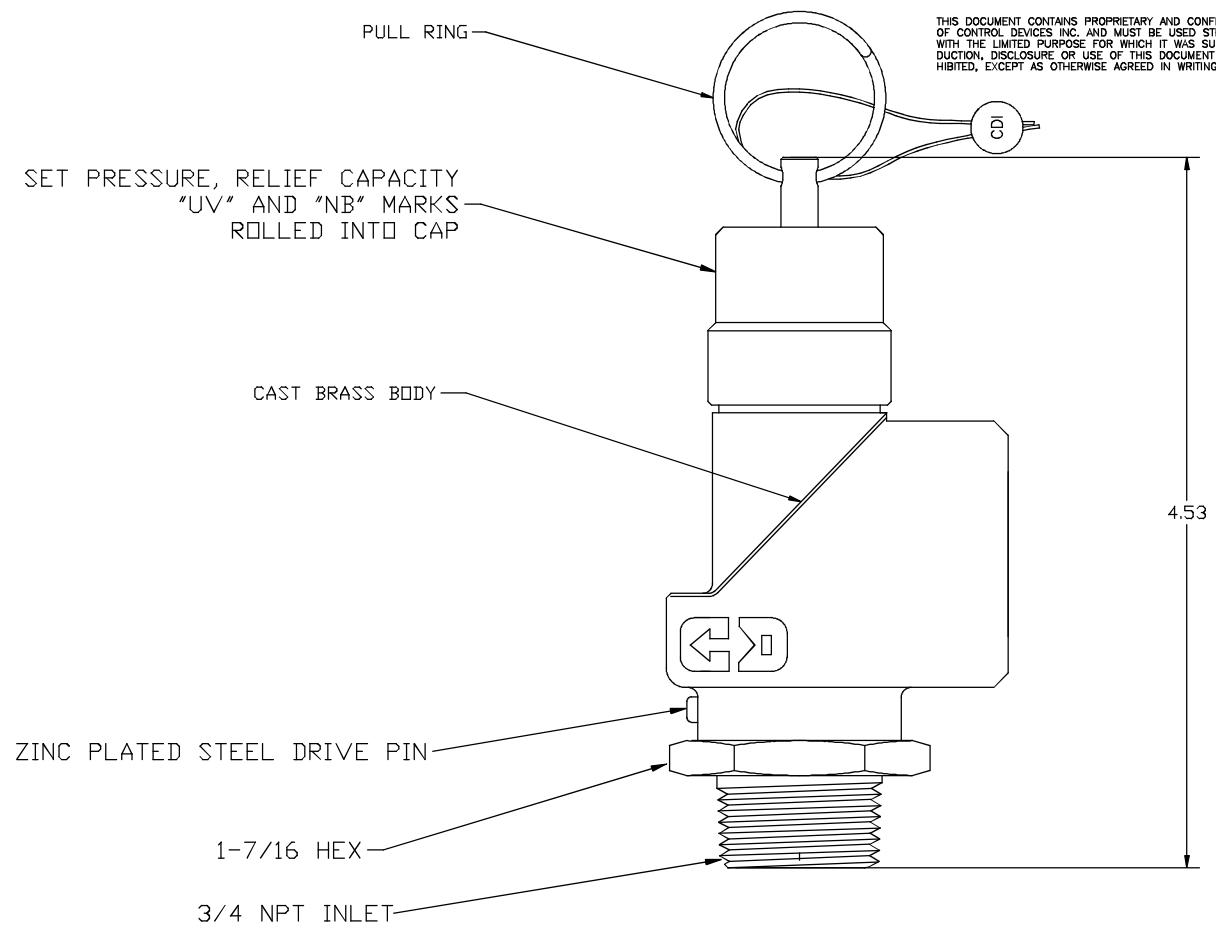


THIS DOCUMENT CONTAINS PROPRIETARY AND CONFIDENTIAL INFORMATION OF CONTROL DEVICES INC. AND MUST BE USED STRICTLY IN ACCORDANCE WITH THE LIMITED PURPOSE FOR WHICH IT WAS SUBMITTED. ANY REPRODUCTION, DISCLOSURE OR USE OF THIS DOCUMENT IS EXPRESSLY PROHIBITED, EXCEPT AS OTHERWISE AGREED IN WRITING.

DATE	SYM	REVISION RECORD	ECN NO.	CHK.
7/05	A	RELEASE TO PRODUCTION	05-341	
5/15	B	UPDATED TITLE BLOCK	15-164	




NOTES:

1. SET PRESSURE RANGE 50 TO 300 PSI
2. CERTIFIED RELIEF CAPACITY IS GIVEN BY THE EQUATION

$$Q = 3.26 (1.1P + 14.7)$$
 WHERE
 Q = RELIEF CAPACITY IN SCFM, AND
 P = SET PRESSURE IN PSI
3. MATERIALS OF CONSTRUCTION:
 BODY, ROD, DISK, ADJUSTMENT
 SPRING, PULL RING - STAINLESS STEEL
 O-RING - SILICONE OR FLUOROCARBON RUBBER
 SEAL - LEAD
4. ORIFICE DIA. = .530
5. MAX TEMPERATURE 300 DEG F.

ALL DIMENSIONS ARE IN INCHES.

TOLERANCES (EXCEPT AS NOTED)		 control devices LLC 1555 LARKIN WILLIAMS ROAD FENTON, MISSOURI 63026			
DECIMAL ±	MATERIAL	SCALE	SIZE	DRAWN BY	
FRACTIONAL ±		1:1	B	RMH	
ANGULAR ±	TITLE				
DATE	SAFETY VALVE, 3/4 NPT OUTLET				
7/29/98	CAD FILE		DRAWING NUMBER		
Q:\Engr\DOC\Drwgs\Outline Drwgs- contr\SCB7575.DWG			SCB7575	Rev B	