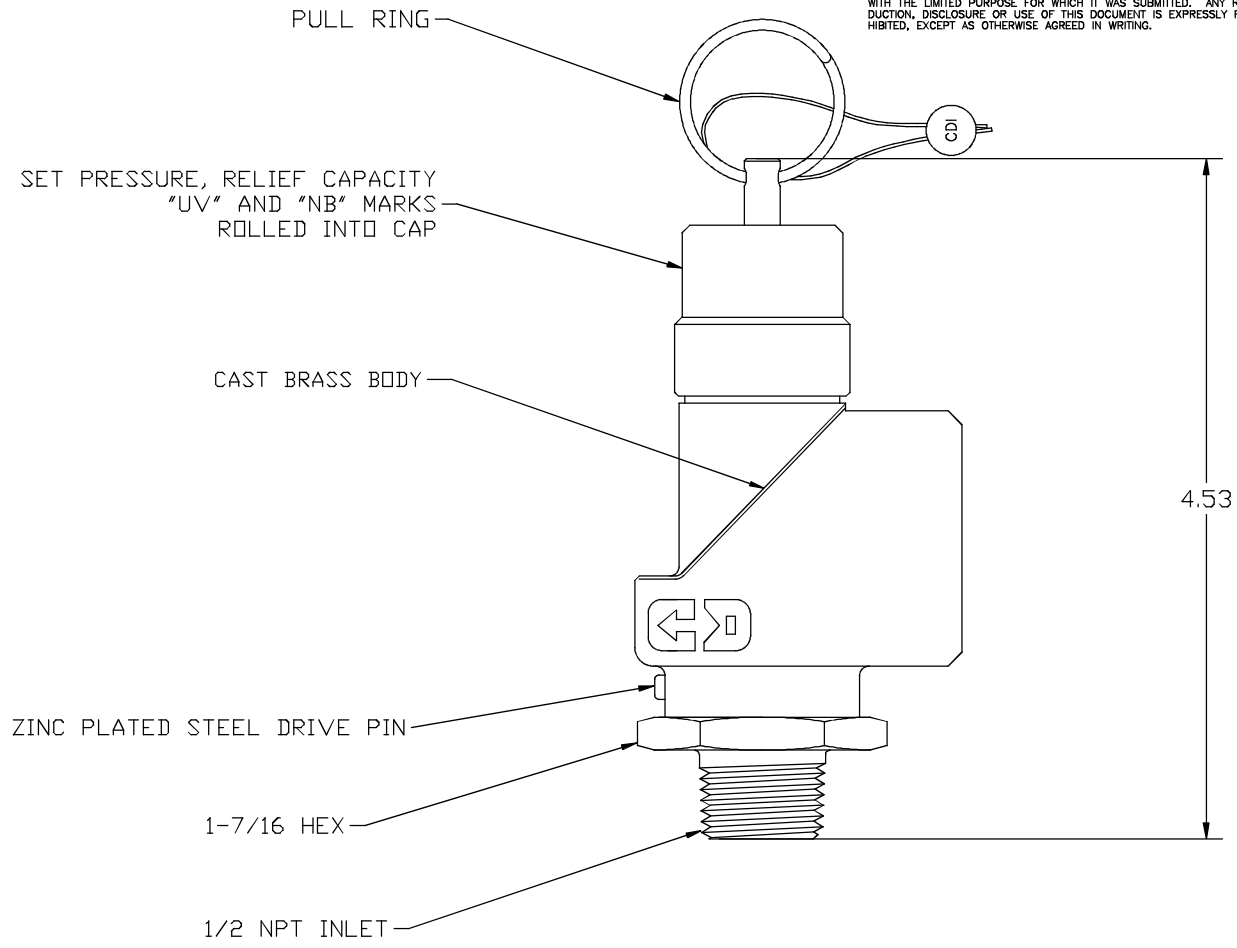


THIS DOCUMENT CONTAINS PROPRIETARY AND CONFIDENTIAL INFORMATION OF CONTROL DEVICES INC. AND MUST BE USED STRICTLY IN ACCORDANCE WITH THE LIMITED PURPOSE FOR WHICH IT WAS SUBMITTED. ANY REPRODUCTION, DISCLOSURE OR USE OF THIS DOCUMENT IS EXPRESSLY PROHIBITED, EXCEPT AS OTHERWISE AGREED IN WRITING.


DATE	SYM	REVISION RECORD	ECN NO.	CHK.
7/05	A	RELEASE TO PRODUCTION	05-343	
5/15	B	UPDATED TITLE BLOCK	15-164	



NOTES:

1. SET PRESSURE RANGE 50 TO 300 PSI
2. CERTIFIED RELIEF CAPACITY IS GIVEN BY THE EQUATION  
 $Q = 3.26 ( 1.1P + 14.7)$ , WHERE  
 Q = RELIEF CAPACITY IN SCFM, AND  
 P = SET PRESSURE IN PSI
3. MATERIALS OF CONSTRUCTION:  
 BODY, ROD, DISK, ADJUSTMENT  
 SPRING, PULL RING - STAINLESS STEEL  
 O-RING - SILICONE OR FLUOROCARBON RUBBER  
 SEAL - LEAD
4. MAX TEMPERATURE 300 DEG F.
5. ORIFICE DIA. = .530

ALL DIMENSIONS ARE IN INCHES.

TOLERANCES (EXCEPT AS NOTED)		 <b>control devices LLC</b> 1555 LARKIN WILLIAMS ROAD FENTON, MISSOURI 63026			
DECIMAL ±	MATERIAL	SCALE 1:1	SIZE B	DRAWN BY RMH	
FRACTIONAL ±				APPROVED BY	
ANGULAR ±	TITLE SAFETY VALVE, 1" NPT OUTLET				
DATE 7/29/98	CAD FILE Q:\Engr\DOC\Drwgs\Outline Drwgs- contr\SCB5010.DWG		DRAWING NUMBER SCB5010		
			Rev B		