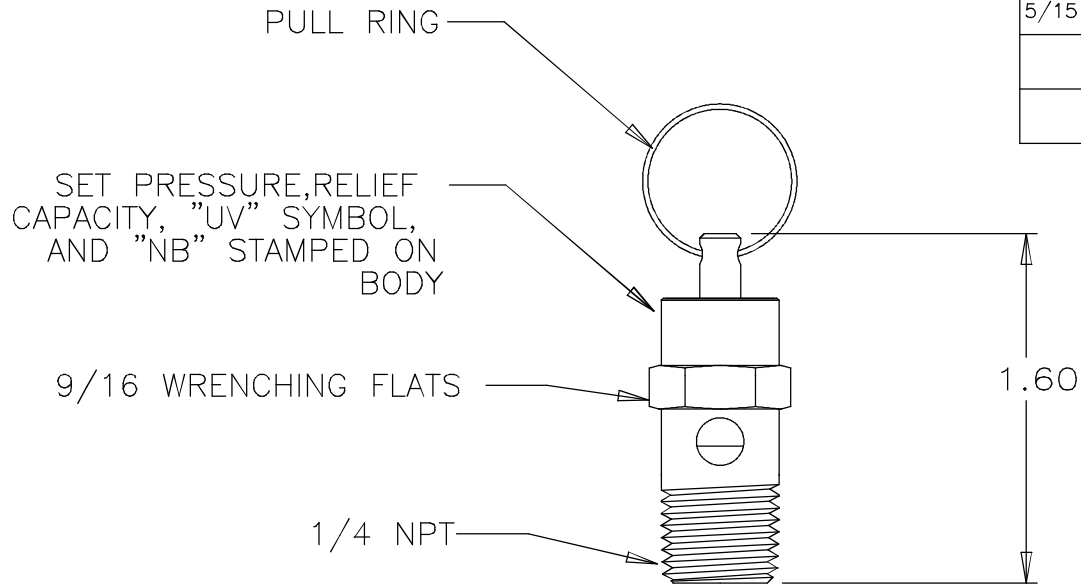


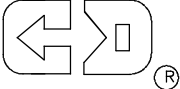
THIS DOCUMENT CONTAINS PROPRIETARY AND CONFIDENTIAL INFORMATION OF CONTROL DEVICES INC. AND MUST BE USED STRICTLY IN ACCORDANCE WITH THE LIMITED PURPOSE FOR WHICH IT WAS SUBMITTED. ANY REPRODUCTION, DISCLOSURE OR USE OF THIS DOCUMENT IS EXPRESSLY PROHIBITED, EXCEPT AS OTHERWISE AGREED IN WRITING.

DATE	SYM	REVISION RECORD	ECN NO.	CK.
3/94	D	REDRAWN ON CAD		
7/05	E	ADDED NOTE 5	05-328	
5/15	F	UPDATED TITLE BLOCK	15-164	



NOTES

1. SET PRESSURE RANGE IS 75 PSI TO 250 PSI.
2. RELIEF CAPACITY IS GIVEN BY THE EQUATION  
 $Q = 0.276(1.1P + 14.7)$ , WHERE  
 Q = RELIEF CAPACITY IN SCFM, AND  
 P = SET PRESSURE IN PSI
3. MATERIALS OF CONSTRUCTION  
 BODY, ROD, SCREW--BRASS  
 SPRING--STAINLESS STEEL  
 PAD--FLUOROCARBON  
 PULL RING--STAINLESS STEEL
4. MAX TEMPERATURE 250° F
5. ORIFICE DIA. = .156 IN.

TOLERANCES (EXCEPT AS NOTED)		 control devices LLC 1555 LARKIN WILLIAMS ROAD FENTON, MISSOURI 63026			
DECIMAL +		MATERIAL	SCALE	SIZE	DRAWN BY
FRACTIONAL +			FULL	A	APPROVED BY
ANGULAR +		TITLE			
DATE	1/15/91	VALVE, ASME SAFETY, 1/4 NPT			
		CAD FILE	DRAWING NUMBER		
		Q:\Engr\DOC\Drwgs\Outline Drwgs- contr\SP25.DWG	SP25		REV F

ALL DIMENSIONS ARE IN INCHES.