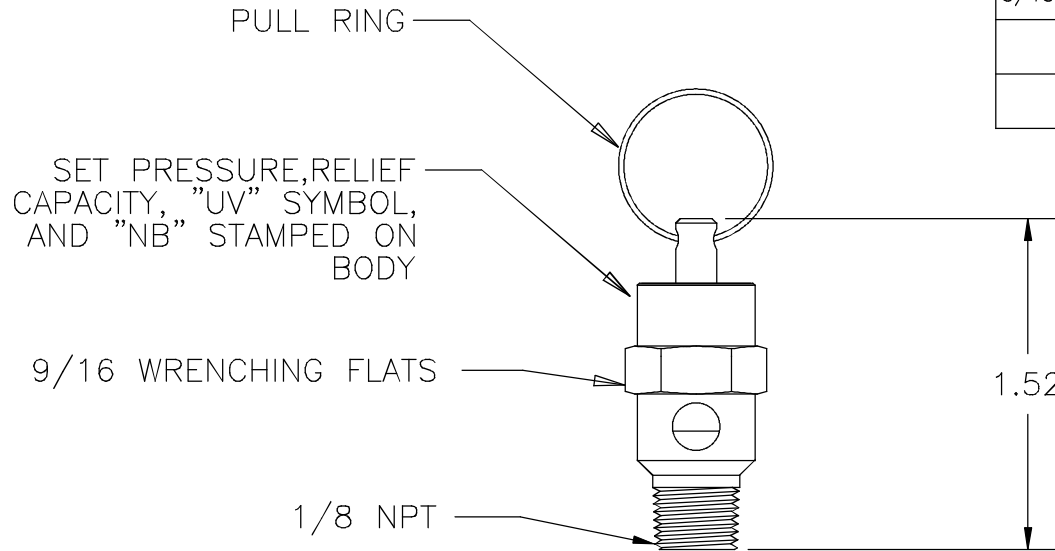


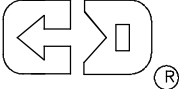
THIS DOCUMENT CONTAINS PROPRIETARY AND CONFIDENTIAL INFORMATION OF CONTROL DEVICES INC. AND MUST BE USED STRICTLY IN ACCORDANCE WITH THE LIMITED PURPOSE FOR WHICH IT WAS SUBMITTED. ANY REPRODUCTION, DISCLOSURE OR USE OF THIS DOCUMENT IS EXPRESSLY PROHIBITED, EXCEPT AS OTHERWISE AGREED IN WRITING.

DATE	SYM	REVISION RECORD	ECN NO.	CK.
3/94	D	REDRAWN ON AUTOCAD		
7/05	E	ADDED NOTE 6	05-329	
5/15	F	UPDATED TITLE BLOCK	15-164	



NOTES

1. SET PRESSURE RANGE IS 75 PSI TO 250 PSI.
2. RELIEF CAPACITY IS GIVEN BY THE EQUATION
 $Q = 0.276(1.1P + 14.7)$, WHERE
 Q = RELIEF CAPACITY IN SCFM, AND
 P = SET PRESSURE IN PSI
3. MATERIALS OF CONSTRUCTION
 BODY, ROD, SCREW--BRASS
 SPRING--STAINLESS STEEL
 PAD--FLUOROCARBON
 PULL RING--STAINLESS STEEL
4. MAX TEMPERATURE 250° F
5. MAX INSTALLATION TORQUE = 10 FT LBS
6. ORIFICE DIA. = .156 IN.

TOLERANCES (EXCEPT AS NOTED)		 control devices LLC 1555 LARKIN WILLIAMS ROAD FENTON, MO 63026			
DECIMAL +		MATERIAL	SCALE FULL	SIZE A	DRAWN BY RMH
FRACTIONAL ±			APPROVED BY		
ANGULAR +		TITLE VALVE, ASME SAFETY, 1/8 NPT			
DATE 1/15/91		CAD FILE	DRAWING NUMBER SP12		
ALL DIMENSIONS ARE IN INCHES.		Q:\Engr\DOC\Drwgs\Outline Drwgs- contr\SP12.DWG		REV F	